



IM 2800 P

EXHAUST GAS ANALYSER FOR INDUSTRIAL APPLICATIONS

The IM 2800 is a high quality exhaust gas analyser for industrial applications. It can be equipped with up to 6 gas sensors. The basic unit IM 2800P4 has a oxygen (O2), a carbon monoxide (CO), a nitric oxide (NO) and a sulfur dioxide (SO2) sensor. Furthermore it calculates the most important combustion parameters as well.



MEASURED PARAMETERS	
■ Oxygen	O2 in Vol. %
■ Carbon Monoxide	CO in ppm
■ Nitric Oxide	NO in ppm
■ Sulfur Dioxide	SO2 in ppm
■ Flue gas temperature	TG in °C
■ Ambient temperature	TA in °C
■ Draft / Pressure	P in hPa
OPTIONAL	
■ Nitric Dioxide	NO2
■ Hydrogen Sulfide	H2S
■ Carbon Dioxide	CO2
■ Hydrocarbons	HC
■ Flue-Gas Temperature	TG up to 1500°C
■ Differential Pressure	ΔP
■ Velocity	v
■ Soot	Filterpapier 0-9
CALCULATED VALUES	
■ Carbon Dioxide	CO2 in Vol. %
■ Heat losses	qA
■ Excess Air	LAMBDA

STANDARD	
■ Rugged case with additional compartment	■ Memory
■ Condensation trap with integrated filter	■ Statistics with average value
■ 4-lines, backlit LCD Display for simultaneous display of 6 values	■ Rechargeable battery; up to 6 hours
■ Diagnostic program for all functions and components	■ Thermal printer
■ RS232 Interface	■ Gas sampling probe
	■ Manual
	■ Power cord
OPTIONAL	
■ Differential pressure measurement	■ IMData – Data transfer program
■ High temperature measurement up to 1500°C	■ Longer sheaths, flexible sheaths
■ Velocity measurement	■ Longer hoses
■ Soot measurement	■ CO multi-hole sheath



TECHNICAL DATA

PARAMETER	PRINCIPLE	RESOLUTION	ACCURACY	RANGE
O ₂ Oxygen	Electrochemical	0.1 Vol.%	± 0.2 %	0-20.9 Vol. %
CO Carbon Monoxide	Electrochemical	1 ppm	Z	0-2000 ppm
CO Carbon Monoxide	IR	0.01 Vol.%	Z	0-20.00 Vol. %
NO Nitric Oxide	Electrochemical	1 ppm	Z	0-2000 ppm
SO ₂ Sulphur Dioxide	Electrochemical	1 ppm	Z	0-4000 ppm
NO ₂ Nitrogen Dioxide	Electrochemical	1 ppm	Z	0-100 ppm
H ₂ S Hydrogen Sulphide	Electrochemical	1 ppm	Z	0-100ppm
HC Hydrocarbons	IR	0.01 Vol.%	Z	0- 5.00 Vol. %
CO ₂ Carbon Dioxide	IR	0.01 Vol.%	Z	0- 25.00 Vol. %
TG Flue temperature	Thermocouple K	1 K	± 2 %	-20/1200°C
TG Flue temperature	Thermocouple R	1 K	± 2 %	-20/1500°C
VL Ambient temperature	Semiconductor	1 K	± 0.5 K	-20/120°C
P Draft/ Pressure	Solid state	0.01 hPa	± 2 %	-20/+20hPa
ΔP Differential Pressure	Solid state	0.01 hPa	± 2 %	±40hPa
V Velocity	Solid state	0.1 m/s	± 2 %	130 m/s
CO ₂ Carbon Dioxide	Calculation	0.1 Vol.%	± 0.2 %	0-CO ₂ max
qA Losses	Calculation	0.1 %	± 0.5 %	0-99.9 %
λ Excess Air	Calculation	0.01	± 2 %	1-9.99
Soot	Filter paper			

Fuels: Fuel oil extra light, Natural gas, Town gas, Coalgas, Liquid gas, Hard coal hb 1950, Wood (air dry), Fuel oil light, Fuel oil heavy, Coaltar oil, Liquid gas air ventil., Liquid gas air, Propane ventil., Propane, Butane ventil., Butane, Propane / Butane ventil., Propane / Butane, Biogas ventil., Biogas, Hard coal hb 7450, Hard coal hb 7170, Hard coal hb 2230

Gas sampling probe: Sheath length 250mm, hose 2,5m

Measuring units: ppm, mg/m³, mg (Ref.O₂)

Power supply: 240V/50Hz; 120V/60Hz; rechargeable battery

Dimensions: 380 x 185 x 315mm

Weight: 7,5 kg

Operating temperature: 0-40°C; 10-90% RH non condensing

IM2800P4	O₂, CO, NO, SO₂	Part.-No. 28004
IM2800P5	O₂, CO, NO, SO₂, 5th sensor	Part.-No. 28005
IM2800P6	O₂, CO, NO, SO₂, 5th sensor, 6th sensor	Part.-No. 28006
IM2800A	O₂, CO (IR-Sensor), NO, CO₂ (IR-Sensor), HC (IR-Sensor)	Part.-No. 28100

Z = 0-20% of the measuring range ± 1% of the maximum value
= 21-100% of the measuring range ± 5% of the displayed value

Other measuring ranges / sensors / fuels upon request
Max. 6 sensors

ACCESOIRES

CD100A – Gas Leal Detector

Small, easy to use Gas Leak Detector for combustible gases.

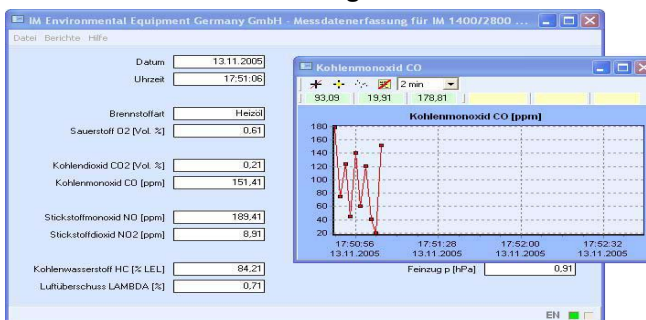


INF155 – IR Thermometer

High quality IR – Thermometer



IMData – Data Transfer Program



IM Environmental Equipment Germany GmbH reserves the right to adopt technical modifications without prior notice.